





Mandatory Safety

Caution:

- Please carefully read the instruction manual provided before you use this product, and never use it for purposes other than those listed here.
- Remove all outer packaging before use.
- To avoid damage to the product, please only use the original cable and the adapter included in the scope of delivery.
- When unplugging the device, hold it and the power adapter firmly in your hand. Do not pull on the cable!
- If the unit is not being used for an extended period of time: unplug the power adapter, remove bottle, clean the unit and allow to dry completely.
- The precautions listed in this user manual are to guarantee the safe and proper use of the Aroma Nebulizer, and thereby to protect the user or other persons from any danger and the device from damage. Be sure to follow these instructions.

Warning:

- 
- This device is not intended for use by persons with reduced physical, sensory or cognitive capacities, unless they have been trained to use the device correctly and have understood the risks involved.
- 
- In the event of smoke, an abnormal smell, unusual sounds or other anomalies, stop using the product immediately and unplug the device.
- 
- Do not modify, fix, or dismantle this product, as fire, electric shock, or damage may occur.
- 
- When this device is not being used for a longer period of time, it must be unplugged from the electrical socket and any remaining water removed. Otherwise it may malfunction, or an electric shock may occur.
- This device must be disconnected from the power source and the bottle must be removed before it is cleaned or serviced.
 - Please avoid dripping the essential oil onto the exterior of the device or onto furniture. If this should accidentally happen, wipe it immediately with a damp cloth and if necessary, use a bit of dish detergent. Essential oils may damage and discolor sensitive surfaces such as plastics or wood. This damage is usually irreversible!
 - This product is not medical equipment. Use only as a fragrance device, it is not intended for inhalation.
 - In the event of pregnancy, lung disease, cancer, epilepsy, or other illnesses, please consult your doctor or non-medical practitioner. Stop using the product and open the windows for ventilation if you start to feel unwell.
 - Do not handle the main unit and outlet with wet hands, or let water or other liquids spill onto them, as this may result in electric shocks.



This product is NOT a toy. Not suitable for use by children. Keep the device, all parts/components, and the power cable out of the reach of children. Children should be properly supervised to ensure that they will not play with this product.

This Aroma Nebulizer is to be used under adult supervision only. Please read the detailed instructions and cautionary information before using this for the first time!

Small parts included may be swallowed and cause suffocation. Therefore, these parts should not be stored within reach of children.

Do not spray mist into your eyes or mouth!

To avoid fire, electric shock, injury or damage, do not place the product in the areas listed below:
- Environments exposed to direct sunlight and temperatures below 10 °C or over 30 °C
- Near sources of ignition
- Near pressurized containers and combustibles

Caution:

1. The unit should be set up in a safe place and on a firm, non-tilting base. Do not place on carpets, rugs, wooden/polished furniture, or uneven or unstable surfaces.
2. Please use only 100 % pure PRIMAVERA essential oils or fragrance blends that come in 5 or 10 ml PRIMAVERA bottles. The unit must always be switched off and unplugged from the power outlet before filling!
3. For best results, we recommend that you use 100 % pure essential oils or fragrance blends. Artificial fragrances and aromas might soil or damage the unit.
4. Do not use any viscous or strongly coloring essential oils, as the device may sustain damage.
5. Continuous use of the Aroma Nebulizer may damage the product in the long term and shorten its lifetime.
6. Do not cover the device or remove the lid when the Aroma Nebulizer is in operation.
7. Device should only be used indoors. Not intended for use in wet rooms.
8. Do not immerse in water or other liquids.
9. If the device falls down, shut it off and unplug it.
10. After use, switch off the device, remove the bottle, clean the device, and store it in a dry place.
11. This device is intended for PERSONAL USE ONLY. It may only be used for the purposes described here. Use only the accessories provided by the manufacturer. This is particularly applicable for the adapter and the cable.
12. If any damage occurs to electrical parts, especially if the power cable is faulty, do not operate the device. In this case, please contact us or have the device repaired by authorized specialized personnel. Please do not under any circumstances open the device or electrical parts yourself, and do not modify the device.

Safety Advice for the Use of Essential Oils and Fragrance Blends

Please carefully read the instructions provided and the information on the label of your essential oils and fragrance blends. Please do not use viscous or strongly coloring essential oils, as the device may sustain damage. You can obtain more information on this from PRIMAVERA customer service or on our product page under "Downloads". The link or QR code is printed below.

Disposal

If this electrical or electronic device is no longer used, all consumers are legally obliged to dispose of it separately from unsorted household waste. Electric devices are therefore marked with the symbol shown below. You can deposit devices at the collection points of the public waste management authorities or at disposal points set up by the manufacturers and retailers within the meaning of the ElektroG (electrical and electronic equipment law). You can find an online directory of collection and disposal points in Germany at www.ear-system.de. These collection points are regulated according to 2012/19/ EU and 2006/66/EC, subject to state and legislation.

We reserve the right to make technical changes to the Aroma Nebulizer and any substantive changes to these instructions.



Disclaimer

We accept no liability for damage resulting from incorrect use of this product or caused by the use of essential oils.

Model:	BL-060A
Capacity:	5 ml or 10 ml amber glass bottles containing 100% pure PRIMAVERA essential oils
Operating Modes:	1 hour, 2 hours or 5 hours in interval mode
Interval Modes:	5 min. on / 10 min. off or 5 min. on / 5 min. off
Comsumption:	Approx. 0.35 ml in mode "one hour on interval mode LOW"; approx. 3.5 ml in mode: "five hours on interval mode HIGH"
Material:	Concrete, metal and high quality BPA-free plastic
Power Supply Input:	AC 100–240V, 50/60Hz, 0.2A
Power Supply Output:	DC 5.0V, 1.0A, 5.0W
Power Consumption:	3W
Volume:	32dB
Area covered by scent:	Up to 80 m²

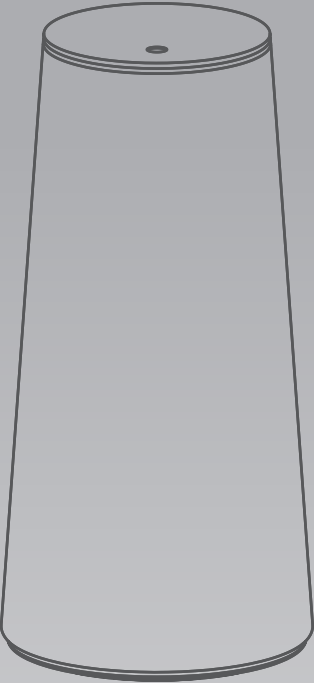
You can find more information on this product and its application at www.primaveralife.com/aroma-zerstaebuere-purist.html



PRIMAVERA®

Purist

AROMA NEBULIZER



Important Information About Usage And Cleaning

PRIMAVERA LIFE GMBH, Naturparadies 1, 87466 Oy-Mittelberg, Germany, www.primaveralife.com

EN April 2023

Dear Customer,

Thank you for choosing the PRIMAVERA Aroma Nebulizer Purist.

To make sure you can enjoy this premium nebulizer for as long as possible, please read these instructions carefully and follow all the safety advice exactly.

We wish you lots of enjoyment and many fragrant hours with this versatile, easy-to-use fragrance device.

More information on the product can be found on our website www.primaveralife.com.

Fragrant greetings from nature's paradise at the foot of the Alps,
Your PRIMAVERA Team

Simple Elegance. Pure Diffusion. Powerful Fragrance Benefit.

- Great fragrance range of up to 80 m²
- Understated, natural design with a sleek, modern shape
- Easy-to-use pure oil, waterless technology
- Simple use of original PRIMAVERA bottles (5 and 10 ml)
- Options for 2 intensity levels and 3 scent time levels
- Innovative atomizing technology patented in Germany
- High-quality concrete and metal materials
- Sustainable and long-lasting thanks to replaceable nozzle
- Fast and easy cleaning

Instructions for Use in a Child's Room

When using the Aroma Nebulizer Purist in a child's room, be sure to limit the scenting time (max. 1 interval) and to adequately ventilate the room after use.

Using the adapter / cable

The nebulizer is operated with the help of the adapter / cable included with the device. Using other USB ports, such as those on a computer or laptop, is not an option, as this may result in malfunctions and damage to the nebulizer or the USB port used. Please use only the original adapter and cable provided by the manufacturer. Adapters and cables with divergent technical specifications may result in damage to the device! To obtain replacement parts, such as the original adapter or the original cable, please always get in touch with our PRIMAVERA customer service.

We assume no liability for damage caused by non-proprietary equipment.

Consumption

At its lowest setting (one hour on interval mode LOW), the Aroma Nebulizer Purist uses approx. 0.35 ml essential oil. When used daily in this mode, a 5ml bottle will last a maximum of 14 days. Daily usage on the highest fragrance setting (five hours on interval mode HIGH) is around 3.5 ml.

Tip

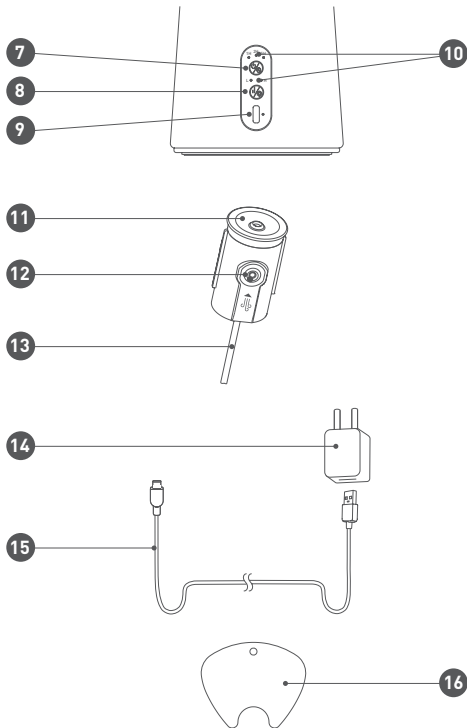
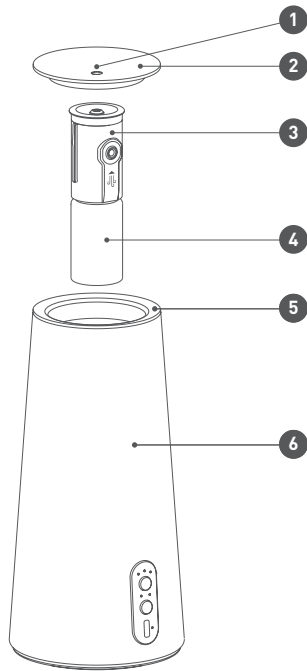
For spaces of up to 30 m², diffusing fragrance twice a day for 30 minutes on interval setting LOW is generally sufficient. Due to the effective diffuser technique, the fragrance molecules remain in the ambient air for a long while.

Material

Concrete is a natural material. Small inclusions, irregularities, and color deviations are, therefore, a sign of natural quality. In that way, every Aroma Nebulizer Purist is unique.

Product description

- 1 Mist nozzle
- 2 Metal cover
- 3 Nozzle
- 4 Bottle
- 5 LED lighting
- 6 Concrete shell
- 7 Operating mode button
- 8 Interval mode button and LED controller
- 9 USB-C port
- 10 LED indicator light
- 11 Nozzle cover
- 12 Air intake
- 13 Riser pipe
- 14 Adapter
- 15 Cable
- 16 Dropper insert tool



Initial Operation

1. Remove metal cover, remove foam ring before first use; pull nozzle straight up and out.
2. Turn included bottle counterclockwise and remove. Please make sure to keep this for later purposes!
3. Pull riser pipe out and cut off 5 mm for a 10 ml bottle or 15 mm for a 5 ml bottle from the **upper** end of the pipe. Slide the riser pipe tightly into the nozzle.
4. Open the cap of the PRIMAVERA Blend. Remove the dropper insert using the tool (16), carefully insert the riser pipe into the bottle and turn clockwise to screw the nozzle to the bottle. Only fasten finger-tight! Please perform these processes on a resistant surface.
5. Insert the nozzle vertically into the unit. **IMPORTANT: Pay attention to air intake and symbols on the unit!** Place the metal cover in position.
6. Connect the USB-C plug to the unit. Then connect the USB plug with the adapter and plug into the outlet.
7. Turn on the nebulizer by pressing the operating mode button.

Settings

Operating mode button:

- Press the button once to turn the unit on. The nebulizer will now operate for 1 hour (1H) in interval mode LOW (L).
- Press the button a second time and the nebulizer switches to the 2-hour interval mode (2H).
- Press the button a third time and the nebulizer switches to the 5-hour interval mode (5H).
- Press the button a fourth time to switch the unit off.



Interval Mode Button / LED Lighting



- When the diffusion is started with the operating mode button (see above), the interval mode LOW (L) begins automatically – 5 minutes on, 10 minutes off.
- The first time you push the button, the nebulizer switches to interval mode HIGH (H) – 5 minutes on, 5 minutes off.
- Push the button a second time and the nebulizer switches back to interval mode LOW (L) – 5 minutes on, 10 minutes off.
- Press and hold the button for longer (3 seconds) to switch the LED lighting off or on again.

Please note:

- Please use only the original adapter and cable that are included in the scope of delivery. Replacements are available from our PRIMAVERA customer service.
- A slight variation in mist amount produced by different units is possible. Factors affecting the mist amount: Consistency of the essential oil, air draft and degree of nozzle contamination.
- The unit shuts off automatically if it tips over. However, it does not shut off when the essential oil is used up!

Cleaning And Maintenance

1. Switch the unit off and unplug from the power supply.
2. Fill rubbing alcohol (isopropyl alcohol max. 70%) into the enclosed bottle.
3. Insert the bottle and nozzle as described above and switch the nebulizer on using the operating mode button. Turn off again after 5 minutes.
4. Remove the nozzle, remove the bottle, lift the cap off the nozzle.
5. Dip a cotton swap in the alcohol and very carefully clean the interior area of the nozzle and the nozzle itself.
6. Replace the cap and press it on. The nozzle can now be used again.

Caution:

- **Do not tip the unit over, since this may allow oil to leak out of the nozzle.**
- Use only rubbing alcohol / isopropyl alcohol in max. 70% concentration, as otherwise the device could incur damage!
- **Alcohol is highly flammable!** When using this, please ensure sufficient room ventilation and do not use near heat and fire sources!
- If the nebulizer is used regularly, it is advisable to clean the nozzle 1-2 times a week!
- Clean the nozzle every time you change the blend.
- Please use only 100% pure essential oils, since other oils could damage the unit!
- Clean the metal cover and concrete shell with a soft cloth.
- Concrete is sensitive and essential oils could leave stains.
- Do not use any corrosive, caustic or abrasive cleaning agents.
- Do not immerse the unit in water or other liquids, and wait until it has completely dried before operating it again.