





Safety Warnings

Caution

- Please be sure to carefully read the instruction manual provided before you use this product, and never use it for purposes other than those listed here.
- Please remove all outer packaging before use.
- To avoid damage to the product, please use only the adapter/cable included in the package.
- When unplugging, hold both the device and the power adapter firmly in your hand. Do not pull on the cable!
- If the unit is not being used for an extended period of time: Unplug the power adapter, empty out the water, clean, and allow to dry completely.
- The precautions listed in this user manual are intended to guarantee the safe and proper use of the Aroma Diffuser, and thereby to protect the user or other persons from any danger and the device from damage. Be sure to follow these instructions.

Warning

- 
- This device is not intended for use by persons with reduced physical, sensory or cognitive capacities, unless they have been trained to use the device correctly and have understood the risks involved.
- 
- In the event of smoke, an abnormal smell, unusual sounds or other anomalies, please stop using the device immediately and unplug it.
- 
- Do not modify, repair or dismantle this product, as this may result in fire, electric shock or other damages.
- 
- When this device is not being used for a longer period of time, it must be unplugged from the electrical outlet and any remaining water removed. Otherwise it may malfunction or an electric shock may occur.
- This device must be disconnected from the power supply before it is cleaned or serviced.
 - The device is only to be used with the recommended vaporizing medium. The use of other substances may give rise to a toxic or fire risk.
 - Please avoid dripping essential oil onto the exterior of the device or onto furniture. If this should accidentally happen, wipe it immediately with a damp cloth and if necessary, use some dish detergent. Essential oils may damage and discolor sensitive surfaces such as plastics or wood. This damage is usually irreversible!
 - This device is not medical equipment. Use only as a fragrance device. It is not intended for inhalation.
 - If you are using the device or the essential oils during pregnancy or an illness, we recommend consulting your physician or your healing practitioner beforehand.
 - If you feel unwell, stop using the device and open a window for ventilation.
 - Do not handle the main unit and outlet with wet hands, nor allow water or other liquids to spill over or into the device, as this may result in an electric shock.
 - **The device is partly made of glass, there is a risk of injury from sharp edges if it breaks. Therefore, do not touch the shards with bare hands!**



This product is NOT a toy. Not suitable for use by children. Keep the device, all parts/components, and the power cable out of the reach of children. Children should be properly supervised to ensure that they do not play with this product.

This Aroma Diffuser is to be used under adult supervision only. Please read the detailed instructions and warnings before using this for the first time!

Small parts included could be swallowed and become a choking hazard. Therefore, please keep these parts out of reach of children.

Do not spray mist into your eyes or mouth!

To avoid fire, electric shock, injury or damage, do not place the product in the areas listed below:

- **Environments exposed to direct sunlight and temperatures below 10 °C or over 30 °C**
- **Near ignition sources**
- **Near pressurized containers or combustibles**

Caution

1. The device should be set upright in a safe place and on a firm, non-tilting surface. Do not place on carpets, rugs, wooden/polished furniture or uneven or unstable surfaces.
2. Use a suitable measuring cup to fill the water tank with water. Never fill it directly from the water faucet. The unit must always be switched off and unplugged from the power outlet before filling!
3. Please pay attention to the maximum fill level indicator and do not overfill the tank, to avoid damage to the device.
4. If the outside of the unit is damp, please dry it carefully and only operate when it is completely dry.
5. For best results, we recommend that you use essential oils or blends. Artificial fragrances and aromas may soil or damage the unit.
6. Do not use any viscous or intensely pigmented essential oils, as the device may sustain damage.
7. Please do not use liquids other than distilled water or tap water at room temperature and essential oils or blends.
8. Continuous use of the Aroma Diffuser may damage the product in the long-term and shorten its service life.
9. Do not cover the device or remove the lid when the Aroma Diffuser is in operation.
10. The device should only be used indoors. Not intended for use in wet rooms.
11. Do not immerse in water or other liquids.
12. If the device should fall down, switch it off and unplug it.
13. After using switch off the device, pour out the water, clean the device, and store it in a dry place.
14. This device is intended for PERSONAL USE ONLY. It may only be used for the purposes described here. Use only the accessories provided by the manufacturer. This applies particularly for the power adapter/cable.
15. If any damage occurs to electrical parts, especially if the power cable is faulty, the device should not be operated. In this case, please get in touch with us or have the device repaired by authorized, specialized personnel. Please do not under any circumstances open the device or electrical parts yourself, and do not modify the device.

Safety advice for the use of essential oils and blends

Please make sure to carefully read the instructions provided and the information on the labels of your essential oils and blends. Please do not use viscous or intensely pigmented essential oils, as these may damage the device. Learn more from PRIMAVERA customer service or on the product leaflet in our online shop.

Disposal

If this electric or electronic device is no longer used, every user has the legal obligation to dispose of it separately from unsorted municipal waste. Electric devices are marked with the symbol shown below. Take such devices to your public waste management authorities or to the collection points established by the manufacturers and distributors within the meaning of the Electrical and Electronic Equipment Act. These collection points are regulated according to 2012/19/EU and 2006/66/EU, depending on country and legislation.

We reserve the right to make technical changes to the fragrance device and any substantive changes to these instructions.



Disclaimer

We accept no liability for damage resulting from incorrect use of this product or caused by the use of essential oils.

Model:	FL-BOBO
Capacity:	120 ml of water and 3 – 5 drops of a natural blend
Operating modes:	1 hour, 2 hours or 4 hours in continuous operation mode, 8 hours in interval operation mode (5 Min. on / 5 Min. off)
Light modes:	Warm white lights, continuous color changes, determining a specific color, preset colors (yellow, orange, red, green, blue and purple) or no light at all
Misting rate:	Approx. 15-20 ml per hour
Ultrasonic frequency:	2.4MHz
Material:	Wood sourced from sustainable forestry, frosted glass and high-quality, BPA-free plastic
Power supply input:	AC 100-240V, 50/60Hz
Power supply output:	DC 5.0V, 1.0A, 5.0W
Area covered by scent:	Approx. 30 m²

You can find more information on this product and its application at www.primaveralife.com/aroma-vernebler-woody.html



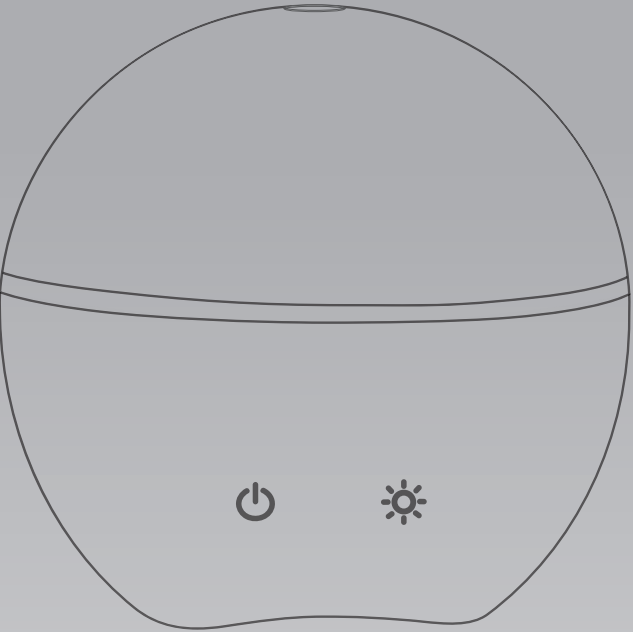
Need spare parts? Get these from customer service (kundenservice@primaveralife.com).



PRIMAVERA®

Woody

AROMA DIFFUSER



Important information about usage and cleaning

Your luminous glass and wood fragrance experience

Dear Customer,

Thank you for choosing the PRIMAVERA Aroma Diffuser Woody

To make sure you can enjoy this premium diffuser for as long as possible, please read these instructions carefully and follow all the safety advice exactly.

We wish you lots of enjoyment and many fragrant hours with this versatile, easy-to-use fragrance device.

More information on the product can be found on our website www.primaveralife.com.

Fragrant greetings from nature's paradise at the foot of the Alps,
Your PRIMAVERA Team

Instructions for use in a child's room

When using the Aroma Diffuser Woody in a child's room, be sure to limit the scenting time (30 minutes), keep the number of essential oil drops low (3 drops to 120 ml), and adequately ventilate the room after use. **Place the device out of the reach of children!**

Using the power supply unit

The device must only be supplied at safety extra low voltage corresponding to the marking on the device. The power supply unit must not be used if the pins of the plug section are damaged. The external flexible cable of the transformer cannot be replaced, if the cord is damaged, the transformer must be disposed. Please use only the original power supply unit/cable provided by the manufacturer. Power supply units/cables with divergent technical specifications may result in damage to the device or fire! Please always get in touch with our PRIMAVERA customer service to obtain replacement parts such as the adapter or cable or the mist chip. We assume no liability for damage caused by non-proprietary equipment.

Natural materials

Glass and wood are natural materials. Inclusions, irregularities and color deviations are indicators of natural quality. Each Aroma Diffuser Woody is unique.

Caution

Clean the water tank every 3 days. Do not use chemical products (such as acids, alkaline, etc) or any corrosive detergents to clean the appliance. Be aware that high humidity levels may encourage the growth of biological organisms in the environment. Do not permit the area around the diffuser to become damp or wet. If dampness occurs, turn off the diffuser. Do not allow absorbent materials, such as carpeting, curtains, drapes, or tablecloths to become damp.

Warning

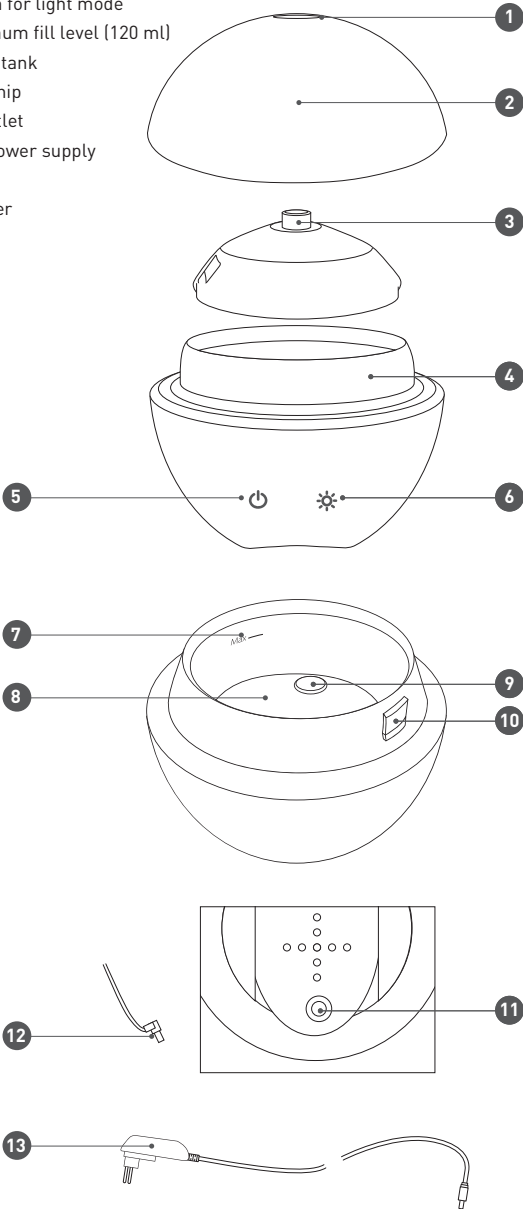
Micro-organisms that may be present in the water or in the environment where the appliance is used or stored, can grow in the water tank and be blown in the air causing very serious health risks when the water is not renewed and the tank is not cleaned properly every 3 days.

Tip

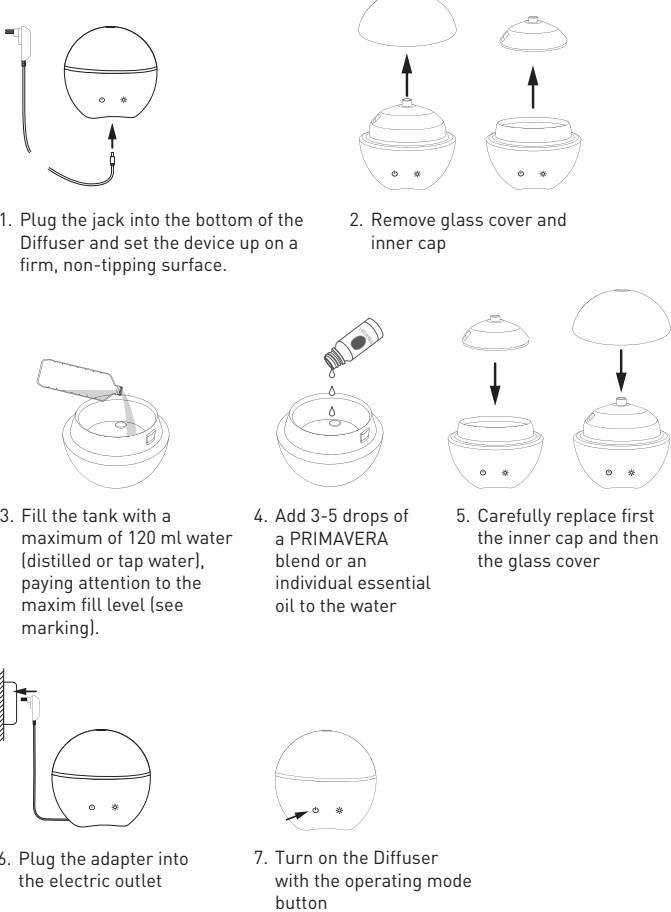
The mist chip has a service life of approx. 3 000 hours of operation. It can be easily replaced. Please get in touch with our PRIMAVERA customer service for this.

Product description

- 1 Mist nozzle
- 2 Glass covering
- 3 Inner covering
- 4 Base
- 5 Operating mode button
- 6 Button for light mode
- 7 Maximum fill level (120 ml)
- 8 Water tank
- 9 Mist chip
- 10 Air outlet
- 11 Unit power supply
- 12 Jack
- 13 Adapter



First use



Settings

Operating mode button

- Touch the button once to turn the unit on. The light blinks green once and then transitions to warm white light. The Diffuser will now run in continuous operation for 1 hour.
- Second touch of the button: The light blinks green twice and then switches to warm white light. The Diffuser will now run in continuous operation for 2 hours.
- Third touch of the button: The light blinks green three times and then switches to warm white light. The Diffuser will now run in continuous operation for 4 hours.
- Fourth touch of the button: The light blinks green four times and then switches to warm white light. The Diffuser will now run in Interval operation for 8 hours. (5 minutes on, 5 minutes off).
- Fifth touch of the button: The unit switches off the diffusion and the light. Touching the operating mode button for longer (3 seconds) switches off the device at any time.

LED lightning button

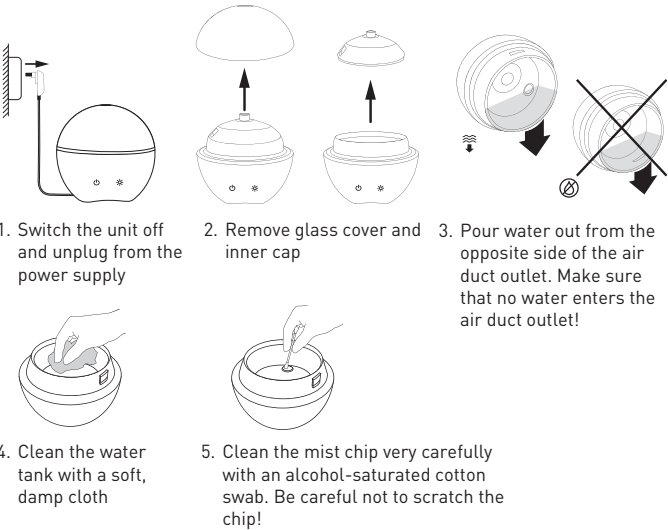
The warm white light switches on automatically when the Diffuser is started via the Operating Mode button (see above).

- First touch of the button: The Diffuser switches the warm white light on.
- Second touch of the button: The Diffuser begins with the continuous color change.
- Third touch of the button: The Diffuser stops the color at any point you wish.
- Fourth to ninth touch of the button: The Diffuser switches to yellow, orange, red, green, blue, and purple.
- Tenth touch of the button: The light switches off.
- The light can be switched off at any time by touching the light mode button longer (3 seconds). The diffusion is not affected and continues to run.

Please note

- Please use only the original adapter/cable which is included in the scope of delivery. Replacements are available from our PRIMAVERA customer service
- A slight variation in mist amount produced by different units is possible. Factors affecting the mist amount: water quality, humidity, ambient temperature, and draft. The unit switches off automatically if it tips over or if the water tank is empty.

Cleaning and maintenance



Caution

- Please always make sure to clean **after every use** and every change of scent.
- **Empty the used water daily and remove all deposits and organic films in the container!**
- Clean the glass cover and the lower part with a soft cloth.
- Clean the water tank with a soft, damp cloth.
- Do not use any corrosive, caustic or abrasive cleaning agents.
- Use a mild dishwashing solution for heavier soiling.
- Clean the mist chip very carefully with an 70% alcohol-saturated cotton swap and be careful not to scratch it.
- Wood is delicate and both essential oils and water may leave stains.
- Do not immerse the unit in water or other liquids and wait until it has completely dried before operating it again.