

Safety warnings

Caution:

- Please read the instruction manual carefully before you use this product, and never use it for purposes other than those listed here.
- Please remove all outer packaging before use.
- The device may only be operated with the supplied power supply unit.
- When unplugging the device, hold it and the power adapter firmly in your hand. Do not pull on the cable!
- If the unit is not being used for an extended period of time: Unplug the device, clean it and allow to dry completely.
- The precautions listed in this user manual are intended to ensure the safe and proper use of the Aroma Fan, and thereby protect the user or other persons from any hazards and the device from damage. Be absolutely sure to follow the instructions below!

Warning:



- In the event of smoke, an abnormal smell, unusual sounds or other anomalies, please stop using the device immediately and unplug it.



- Do not modify, repair or dismantle this product, as this may result in fire, electric shock, or other damages.



- When this device is not being used for a longer period of time, it must be unplugged from the power supply. Otherwise it may malfunction, or an electric shock may occur.

- This device must be disconnected from the power supply before it is filled, cleaned or serviced.
- This device is only to be used with the recommended vaporizing medium. The use of other substances may give rise to a toxic or fire risk.
- Please avoid dripping essential oil onto the exterior of the device or onto furniture. If this does accidentally occur, wipe off immediately to avoid discoloration of the exterior of the product or the furniture.
- This device is not medical equipment. Use only as a fragrance device. It is not intended for inhalation.
- If you are using the device or the essential oils during pregnancy or an illness, we recommend consulting your physician or your healing practitioner beforehand.
- If you feel unwell, stop using the device and open a window for ventilation.
- Do not handle the main unit and outlet with wet hands, nor allow water or other liquids to spill onto them, as this may result in electric shock.



This appliance is NOT a toy. This appliance can be used by children aged from 8 years and above and persons with reduced physical, sensory or mental capabilities or lack of experience and knowledge if they have been given supervision or instruction concerning use of the appliance in a safe way and understand the hazards involved.

Children shall not play with the appliance. Cleaning and user maintenance shall not be made by children unless they are older than 8 and supervised.

Small parts included may be swallowed and are thus a choking hazard. Therefore, please keep these parts out of reach of children.

To avoid fire, electric shock, injury or damage, do not place the product in the areas listed below:

- Environments exposed to direct sunlight and temperatures below 10 °C or over 30 °C
- Near ignition sources
- Near pressurized containers or combustibles

Please ensure that the rooms where the fragrance is used are adequately ventilated.

Caution:

1. The device should be set upright in a safe place and on a firm, non-tilting surface. Do not place on rugs, wood furniture, polished or other sensitive surfaces.
2. Never apply liquids directly to the pad while it is in the device. Rather always remove it first, drizzle onto it, and then re-insert it into the device.
3. Please apply only 2-3 drops to the pad and do not over-soak it, as otherwise essential oil may get into the device or cause spots to appear on the housing.
4. For best results, we recommend that you use our blends. Artificial fragrances and aromas may soil or damage the unit.
5. Do not use any viscous or intensely pigmented essential oils, as the device may sustain damage.
6. Please do not use any liquids other than our blends.
7. Continuous use of the Aroma Fan may damage the product in the long-term and shorten its service life.
8. Do not remove the device lid when the Aroma Fan is in operation.
9. Device should only be used indoors. Not intended for use in humid rooms.
10. Do not immerse in water or other liquids.
11. If the device should fall down, switch it off and unplug it.
12. After using the device, switch it off, clean it and store in a dry place.
13. This device is intended for PERSONAL USE ONLY. It must only be used for the purposes described here. Use only the accessories recommended by the manufacturer. This applies particularly for the power adapter.
14. If any damage occurs to electrical parts, especially if the power cable is faulty, the device should not be operated. In this case, please get in touch with us or have the device repaired by authorized specialized personnel. Please do not under any circumstances open the device or electrical parts yourself, and do not modify the device.
15. The external flexible cable of the power supply unit cannot be replaced. If the cable is damaged, the entire power supply unit must be disposed of.

Safety advice for the use of essential oils and blends

Please make sure to carefully read the instructions provided and the information on the labels of your essential oils and blends.

Please do not use viscous or intensely pigmented essential oils, as these may damage the device. Learn more from PRIMAVERA customer service or on the product leaflet in our online shop.

Disposal

If this electric or electronic device is no longer used, every user has the legal obligation to dispose of it separately from unsorted municipal waste. Electric devices are marked with the symbol shown below. Take such devices to your public waste management authorities or to the collection points established by the manufacturers and distributors within the meaning of the Electrical and Electronic Equipment Act. These collection points are regulated according to 2012/19/EU and 2006/66/EU, depending on country and legislation.



We reserve the right to make technical changes to the fragrance device and any substantive changes to these instructions.

Disclaimer

We accept no liability for damage resulting from incorrect use of this product or caused by the use of essential oils.

Model:	3700471000925
Capacity:	2 - 3 drops of a blend
Operating modes:	2 hours of continuous operation
Fan power	3 levels: gentle, medium, powerful
Light Modes	Continuous color changes, determine a specific color, without light.
Material:	High quality BPA-free plastic, organic cotton* and metal
Power supply input	AC 100-240V, 50 / 60Hz
Power supply output	DC 12V, 0.3A, Max. 3.6W
Area covered by scent:	Approx. 50 m ²

You can find more information on this product and its application at www.primaveralife.com/aroma-ventilator-flower.html



* The cotton used comes from certified organic farming. For further information, please contact our customer service at +49 8366 8988 889.

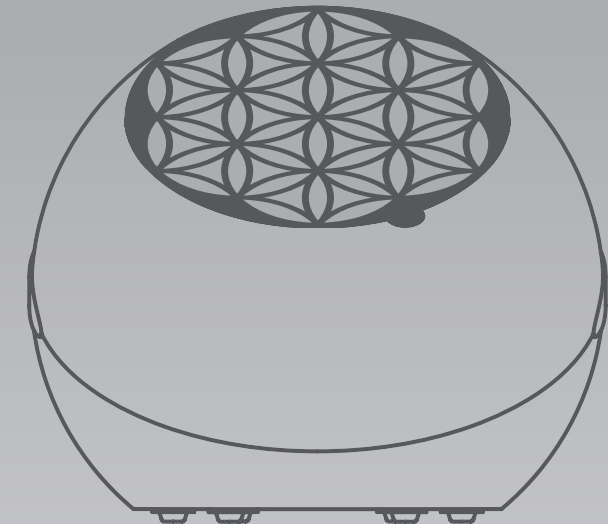
Need spare parts? Get these from customer service (kundenservice@primaveralife.com).



PRIMAVERA®

Flower

AROMA FAN



Important information about usage and cleaning

Powerful and luminous – your colorful fragrance magic for larger spaces

Dear customer,

Thank you for choosing the PRIMAVERA Flower Aroma Fan.

To make sure you can enjoy this premium fan for as long as possible, please read these instructions carefully and follow all the safety advice exactly.

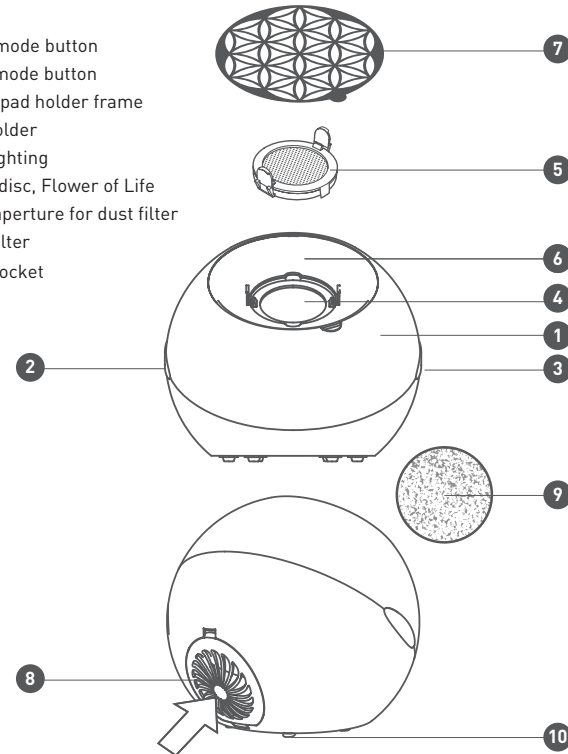
We wish you lots of enjoyment and many fragrant hours with this versatile, easy-to-use fragrance device.

You can find more information on this product at our website www.primaveralife.com.

Fragrant greetings from nature's paradise at the foot of the Alps,
Your PRIMAVERA Team

Product description

- 1 Case
- 2 Light mode button
- 3 Time mode button
- 4 Blend pad holder frame
- 5 Pad holder
- 6 LED lighting
- 7 Metal disc, Flower of Life
- 8 Case aperture for dust filter
- 9 Dust filter
- 10 Plug socket



Instructions for use in a child's room

When using the Aroma Fan Flower in a child's room, be sure to limit the scenting time (30 minutes), keep the number of essential oil drops low (1 drop), and adequately ventilate the room after use. **Place the device out of the reach of children!**

Using the power supply unit

The device must only be supplied at safety extra low voltage corresponding to the marking on the device.

The power supply unit must not be used if the pins of the plug section are damaged.

The external flexible cable of the transformer cannot be replaced, if the cord is damaged, the transformer must be disposed.

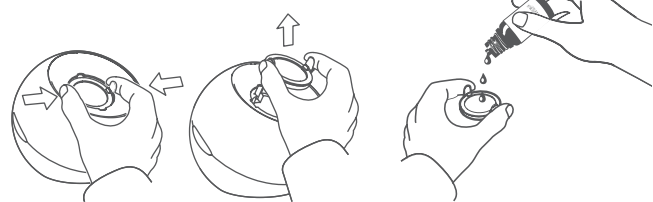
Please use only the original power supply unit/cable provided by the manufacturer. Power supply units/cables with divergent technical specifications may result in damage to the device or fire!

Please always get in touch with our PRIMAVERA customer service to obtain replacement parts such as the adapter. We assume no liability for damage caused by non-proprietary equipment.

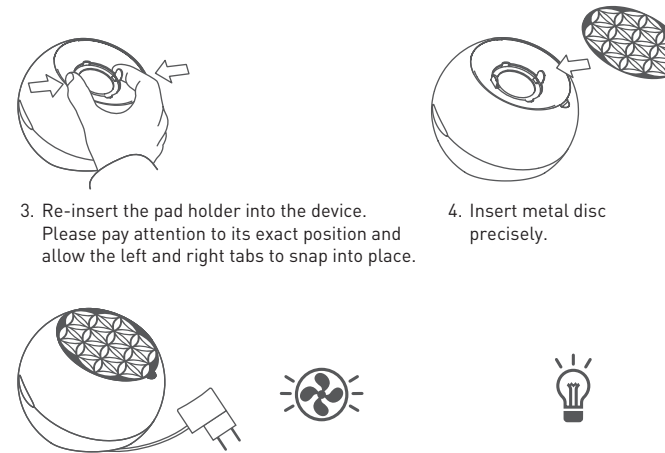
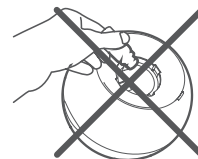
Preparation

- Plug the cable into the outlet (9).
- Place the Flower Aroma Fan on a non-tilting, waterproof and non-sensitive surface.
- Remove pad holder with the pad (5) and fill with **2-3 drops** of a blend.
- Insert the pad holder with the pad (5) into the pad holder bracket (4).
- Be careful that no oil gets onto the exterior of the device casing or into the interior of the device. If this does happen, please immediately wipe down the outside with a damp cloth and the inside with a dry cloth!
- Plug the power adapter into the socket.
- Switch the Flower Aroma Fan on as described below, by pressing the "On" button.

Initial operation



1. Remove metal disc and the pad holder. To do this, use your thumb and index finger to carefully press the lateral tabs towards the middle.
2. Sprinkle **no more than 2-3 drops** of a blend onto the pad. Never drizzle oil directly into the device!



3. Re-insert the pad holder into the device. Please pay attention to its exact position and allow the left and right tabs to snap into place.

4. Insert metal disc precisely.



5. Connect the device to the power supply.
6. Switch on the Flower Aroma Fan by pressing the right-hand button operating mode. Enjoy fragrance and light.

7. Pressing the left-hand button stops the continuous color changing or restarts it. Pressing for 2 seconds switches the color mode off or restarts it.

Settings

Operating mode button:

- Press once to switch the device on and to start the first fan level, "gentle". Continuous diffusion lasts for 2 hours.
- If you press the button a second time, the device switches to the second fan level "medium", with continuous diffusion.
- If you press the button a third time, the device switches to the third fan level "powerful", with continuous diffusion.
- By pressing the button a fourth time, the device switches back to the first "gentle" fan level with continuous diffusion. Every time you press the button, the timer is reset and operation is automatically shut down after 2 hours. Every change in the fan level is indicated by the blinking LED lights. If you press down the operating button for longer than 2 seconds, the device shuts off both the fan and the lighting.

Light mode button:

- Lighting with continuous color changes automatically turns on when the device switched on with the operating mode button or when the operating mode is switched from gentle to medium and powerful.
- Pressing the light mode button stops the color change mode and maintains the color selected at that time.
- Pressing the light mode button again advances the continuous color change mode.
- The lighting can be switched off by pressing the light mode button for 2 seconds.
- Pressing the light mode button a single time again reactivates the continuous color change effect.

Cleaning and maintenance

- Switch the unit off and unplug from the power supply.
- Remove the metal disc and carefully clean with mild detergent and a soft cloth, being careful not to deform the disc. Dry carefully.
- Remove the pad holder
- Remove pad from the pad holder and carefully wipe down both the device and the pad holder with a slightly dampened soft cloth.
- Carefully dry the device and the pad holder.
- Please take care that no liquids get into the interior of the device.
- Open the flap of the dust filter and carefully clean it with a soft cloth.
- Remove the dust filter and clean it under cold running water. Allow the filter to dry completely before re-inserting.
- The dust filter has a very long service life. If needed, replacements can be obtained via PRIMAVERA customer service.
- Always use only the original dust filter.
- Do not use any corrosive, caustic or abrasive cleaning agents.
- Do not immerse the device in water or other liquids.

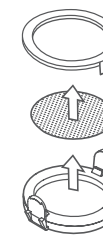
Caution:

- Please always make sure to clean **after every use** and every change of scent.
- Clean the cover and the lower part with a soft cloth.
- Do not use any corrosive, caustic or abrasive cleaning agents.
- Use a mild dishwashing solution for heavier soiling.
- Do not immerse the unit in water or other liquids, and wait until it has completely dried before operating it again.
- Do not use any dust filter except the one that comes with the device (which is located at the back of the device). Do not clog the air inlet opening.
- Always empty, clean, and dry the unit before storing it.

Replace pad



1. Remove metal disc and the pad holder. To do this, use your thumb and index finger to carefully press the lateral tabs towards the middle.
2. Pull the small lateral tabs carefully outwards and pull the upper ring off in an upward movement.



3. Remove the organic cotton pad* and replace with a new one.
4. Assemble in reverse order.

Instructions

Always use only a single pad.

Use a new organic cotton pad* every time you change blends.

The device comes with a total of 2 pad holders and 5 pads each enable fast blend changes.

Please make sure to use only original PRIMAVERA replacement pads. The replacement pad set consists of 2 pad holders and 10 organic cotton replacement pads*.

You can obtain these at retail outlets or in our online shop at www.primaveralife.com

