





Mandatory Safety

Caution:

- Please carefully read the instruction manual provided before you use this product, and never use it for purposes other than those listed here.
- Remove all outer packaging before use.
- In order to avoid damage to the product, please only use the USB cable provided or, if needed, the USB power adapter optionally available from PRIMAVERA.
- When unplugging the device, hold it and the power adapter firmly in your hand. Do not pull on the cable!
- If the unit is not being used for an extended period of time: unplug the power adapter, empty out the water, clean the unit and allow to dry completely.
- The precautions listed in this user manual are to guarantee the safe and proper use of the Aroma Diffuser, and thereby to protect the user or other persons from any danger and the device from damage. Be sure to follow these instructions.

Warning:

- 
- This device is not intended for use by persons with reduced physical, sensory or cognitive capacities, unless they have been trained to use the device correctly and have understood the risks involved.
- 
- In the event of smoke, an abnormal smell, unusual sounds or other anomalies, stop using the product immediately and unplug the device.
- 
- Do not modify, fix, or dismantle this product, as fire, electric shock, or damage may occur.
- 
- When this device is not being used for a longer period of time, it must be unplugged from the electrical socket and any remaining water removed. Otherwise it may malfunction, or an electric shock may occur.
- This device must be disconnected from the power source before it is cleaned or serviced.
 - Please avoid dripping the essential oil onto the exterior of the device or onto furniture. Is this should accidentally happen, wipe it immediately with a damp cloth and if necessary, use a bit of dish detergent. Essential oils may damage and discolor sensitive surfaces such as plastics or wood. This damage is usually irreversible!
 - This product is not medical equipment. Use only as a fragrance device, it is not intended for inhalation.
 - In the event of pregnancy, lung disease, cancer, epilepsy, or other illnesses, please consult your doctor or non-medical practitioner. Stop using the product and open the windows for ventilation if you start to feel unwell.
 - Do not handle the main unit and outlet with wet hands, or let water or other liquids spill onto them, as this may result in electric shocks.



This product is NOT a toy. Not suitable for use by children. Keep the device, all parts/components, and the power cable out of the reach of children. Children should be properly supervised to ensure that they will not play with this product.

This Aroma Diffuser is to be used under adult supervision only. Please read the detailed instructions and cautionary information before using this for the first time!

Small parts included may be swallowed and cause suffocation. Therefore, these parts should not be stored within reach of children.

Do not spray mist into your eyes or mouth!

To avoid fire, electric shock, injury or damage, do not place the product in the areas listed below:

- **Environments exposed to direct sunlight and temperatures below 10 °C or over 30 °C**
- **Near sources of ignition**
- **Near pressurized containers and combustibles.**

Caution:

1. The unit should be set up in a safe place and on a firm, non-tilting base. Do not place on carpets, rugs, wooden/polished furniture, or uneven or unstable surfaces.
2. Use a suitable measuring cup to fill the water tank with water. Never attempt to fill directly under a running tap. Always switch off the device and remove the power cable before filling!
3. Please pay attention to the maximum fill level indicator and do not overfill the tank, to avoid damage to the device.
4. For best results, we recommend that you use 100 % pure essential oils or blends. Artificial fragrances and aromas might soil or damage the unit.
5. Do not use any viscous or strongly coloring essential oils, as the device may sustain damage.
6. Please do not use liquids other than distilled water or tap water at room temperature and 100% pure essential oils or blends.
7. Continuous use of the Aroma Diffuser may damage the product in the long term and shorten its lifetime.
8. Do not cover the device or remove the lid when the Aroma Diffuser is in operation.
9. Device should only be used indoors. Not intended for use in wet rooms.
10. Do not immerse in water or other liquids.
11. If the device falls down, shut it off and unplug it.
12. After use, switch off the device, pour out the water, clean the device, and store it in a dry place.
13. This device is intended for PERSONAL USE ONLY. It must only be used for the purposes described here. Only use the accessories recommended by the manufacturer. This is especially applicable for the USB adapter and USB cable, optionally available from PRIMAVERA.
14. If any damage occurs to electrical parts, especially if the power cable is faulty, do not operate the device In this case, please contact us or have the device repaired by authorized specialized personnel. Please do not under any circumstances open the device or electrical parts yourself, and do not modify the device. The permanently installed Li-Ion battery is not replaceable and can only be removed for disposal.

Safety Advice for the Use of Essential Oils and Fragrance Blends

Please carefully read the instructions provided and the information on the label of your essential oils and fragrance blends. Please do not use viscous or strongly coloring essential oils, as the device may sustain damage. You can obtain more information on this from PRIMAVERA customer service.

Disposal

Disposal If this electric or electronic device is no longer used, all consumers are legally obliged to dispose of it separately from unsorted household waste. Electric devices are therefore marked with the symbol shown below. You can deposit devices at the collection points of the public waste management authorities or at disposal points set up by the manufacturers and retailers within the meaning of the ElektroG (electrical and electronic equipment law). You can find an online directory of collection and disposal points in Germany at www.ear-system.de. These collection points are regulated according to 2012/19/ EU and 2006/66/EC, subject to state and legislation.

We reserve the right to make technical changes to the Aroma Diffuser and any substantive changes to these instructions.



This device contains a permanently installed Lithium-ion battery which cannot be replaced, but can be disposed of by removing it with the proper tools.

Disclaimer

We accept no liability for damage resulting from incorrect use of this product or caused by the use of essential oils.

Model:	BL-045
Capacity:	45 ml water and 3–5 drops of a 100 % pure and natural blend
Operating modes:	30 minute or 4 hour continuous operation, 8 hour interval operation (30 sec. on / 30 sec. off or 5 min. on / 5 min. off)
Misting rate:	Approx. 10 ml per hour
Ultrasonic frequency:	3.0 MHz
Material:	High-quality, BPA-free plastic and carbon steel
USB-C port:	DC 5V, 1A, 5W
Li-Ion battery:	3.6V, 3350mAh
Run time:	Battery capacity approx. 3 hours of continuous operation
Charging time:	Approx. 4.5 hours (device may be used while charging)
Area covered by scent:	Approx. 20 m²

Battery Information

Li-ion batteries normally only have a very low self-discharge. However, we do recommend that the battery should be fully charged at least every 3 months to prevent a permanent deep discharge and thus damage to the battery. Keep the battery away from heat sources. This is an explosion hazard! Do not use charging devices that are damaged in any way.



PRIMAVERA®

Traveller

AROMA DIFFUSER



Important Information About Usage And Cleaning

Dear Customer,

Thank you for choosing the PRIMAVERA Aroma Diffuser Traveller.

To make sure you can enjoy this premium, ultrasonic diffuser for as long as possible, please read these instructions carefully and follow all the safety advice exactly.

We wish you lots of enjoyment and many fragrant hours with this versatile, easy-to-use fragrance device.

More information on the product can be found on our website www.primaveralife.com.

Fragrant greetings from nature's paradise at the foot of the Alps,
Your PRIMAVERA Team

Your Favorite Scent, Always With You – Cordless, Compact, Versatile

- Room scenting that's easy to take anywhere
- Fits in car cup holders
- 4 operating modes including a 30 minute short-duration mode
- Powerful battery for cordless operation

Instructions for Use in a Child's Room

When using the Traveller Aroma Diffuser in a child's room, be sure to limit the scenting time (30 minutes), keep the number of essential oil drops low (3 drops to 45 ml), and to adequately ventilate the room after use.

For Use in the Car

The Traveller Aroma Diffuser fits into most cup holders in the center console. Please always ensure that the diffuser cannot wobble or tip over.

In the event of rapid acceleration, braking or quick turns, the mist stops for a few seconds. This is normal. It's best to use the "30 minute mode" in the car. The unit shuts off automatically after 30 minutes. Longer-term scenting in the car is not advisable due to the size of the space. Please do not use the fragrance device in the car if you have infants. With toddlers and children, we recommend a short scenting time of no more than 10 minutes. When scenting, please ensure an adequate supply of fresh air.

Do not fill the diffuser whilst in the car. The essential oils and the mist should not come into contact with dashboards, seat covers or other parts within the vehicle. Essential oils can cause stains that may not be removable. If contact with the interior equipment occurs, try to remove the essential oil carefully and quickly with an absorbent cloth. Dishwasher liquid diluted in water can be used to help.

Using the Battery

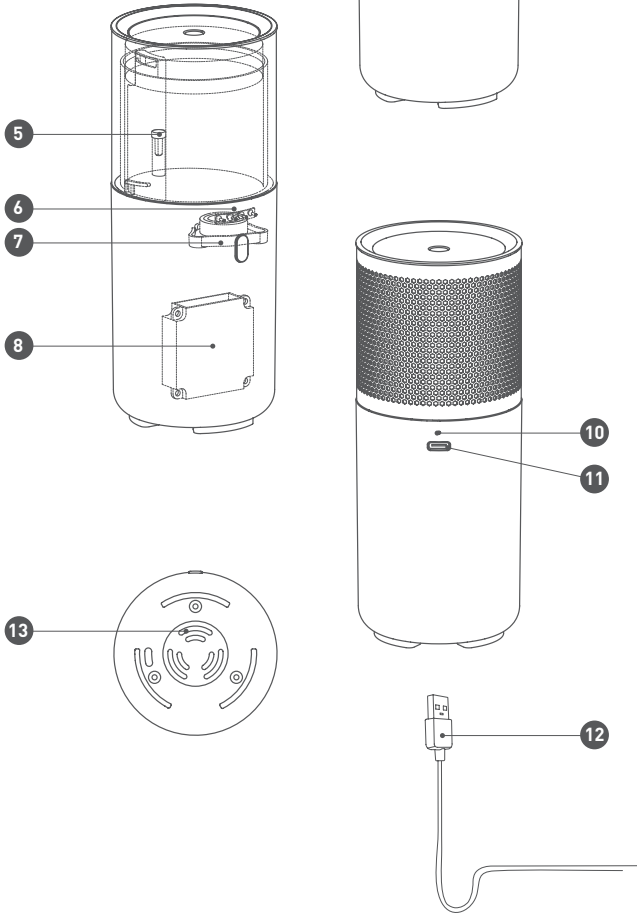
The built-in battery should always be fully charged. Charging is indicated by a red LED. When the battery is fully charged, the LED lights up white. The device can be used normally while it is charging.

Using the USB Port

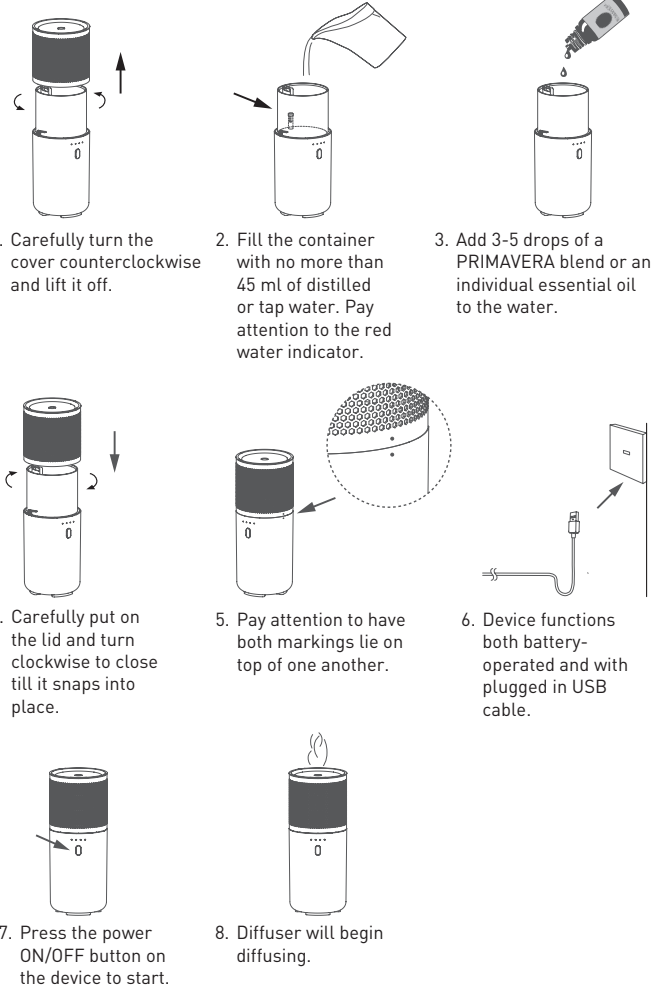
The battery can be charged using the included USB cable. ONLY USB power supplies and ports with 5V and min. 1A may be used. NO power supplies or ports with deviating values may be used! Please use only the USB cable enclosed by the manufacturer.

Product Description

- 1 Mist nozzle
- 2 Cover with metal application
- 3 Air outlet
- 4 Water tank
- 5 Fill level indicator
- 6 LED light
- 7 Mist chip
- 8 Battery
- 9 Mist & time button
- 10 LED battery charge level indicator
- 11 USB-C port
- 12 USB cable
- 13 Air intake



Instructions



Settings

Before using for the first time, please plug the device in with the USB cable and fully charge the battery. The battery is fully charged when the charge level indicator light turns white. The device may already be used while charging.

Mist & Time Button:

- Press the button once to turn the unit on. Continuous diffusion in the "ON" mode lasts 4 hours when powered by the grid and up to 3 hours when powered by the battery.
- If you push the button a second time, the unit switches to "30 minute" mode with continuous diffusion.
- If you push the button a third time, the unit switches to "8 hours - 30 seconds" interval mode. In this mode, diffusion takes place for 30 seconds, followed by an equally long break. In grid operation, the unit automatically shuts down after 8 hours. In battery operation, this mode ends when the battery capacity is exhausted.

- If you push the button a fourth time, the unit switches to "8 hours - 5 minutes" interval mode. In this mode, diffusion takes place for 5 minutes, followed by an equally long break. In grid operation, the unit automatically shuts down after 8 hours. In battery operation, this mode ends when the battery capacity is exhausted.
- Pushing the button a fifth time shuts the device off.

Ambient Lighting:

- The subtle ambient lighting can be turned on or off by holding the button down for longer (3 sec.).
- When the water is used up, the ambient light flashes blue 3 times. The unit shuts off automatically.
- When the battery is empty, the ambient light flashes red three times. The unit shuts off automatically.

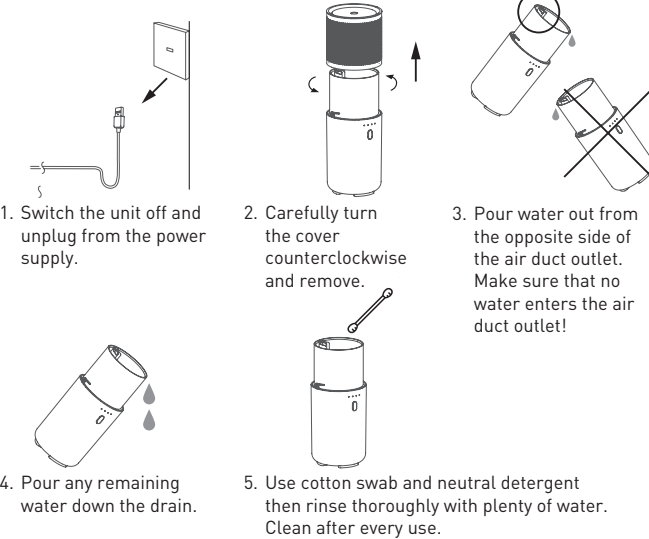
Charge Level LED (rear):

- If the unit is connected to a power source by USB cable, a charging battery is indicated by a red LED. Once the battery is fully charged, this is indicated by a white LED.

Note:

A slight variation in mist amount produced by different units is expected. Factors affecting the mist amount: quality of the water, humidity, ambient temperature, and air flow. The unit shuts down automatically when the water is used up or the device tips over.

Cleaning And Maintenance



Caution:

- Please always make sure to clean **after every use** and every change of scent.
- **Empty the used water daily and remove all deposits and organic films in the container!**
- Clean the cover and the lower part with a soft cloth.
- Clean the water tank with a soft, damp cloth.
- Do not use any corrosive, caustic or abrasive cleaning agents.
- Use a mild dishwashing solution for heavier soiling.
- Clean the mist chip very carefully with a 70% alcohol-saturated cotton swap and be careful not to scratch it.
- Do not immerse the unit in water or other liquids and wait until it has completely dried before operating it again.

