



This device is NOT a toy. This device can be used by children aged 8 years and above and persons with reduced physical, sensory, or mental capabilities, or lack of experience and knowledge, if they have been given supervision or instruction concerning the safe use of the device and understand the hazards involved.

Children must not play with the device.

Cleaning and user maintenance must not be performed by children unless they are older than 8 years of age and supervised.

Included small parts could be swallowed and cause choking. Therefore, these parts must be kept out of the reach of children.

To prevent fires, electric shocks, injuries, or damage, the device must not be used in the following areas:

- Environments with direct sunlight and temperatures below 10 °C or above 30 °C
- Near ignition sources
- Near pressurized containers and fuels

Please ensure adequate ventilation in scented rooms.

#### Caution

1. Place the device upright in a secure location on a firm, stable surface. Do not place it on a carpet, wooden furniture, polished, or other sensitive surfaces.
2. Please fill the bowl with a maximum of 5-8 drops to prevent damage to the device.
3. If the exterior of the device is damp, please dry it carefully and only use it when it is completely dry.
4. For best results, we recommend using our blends. Artificial fragrances and aromas can contaminate or damage the device.
5. Do not use viscous or highly pigmented oils, as this may damage the device.
6. Do not use any liquids other than our blends.
7. Continuous use of the Aroma Warming Stone can lead to long-term damage to the product and shorten its lifespan.
8. The device must not be covered while the Aroma Warming Stone is in operation.
9. The device has hot surfaces in order to vaporize the active ingredients. These surfaces must not be touched during use.
10. Only use the device indoors. Not suitable for damp or humid rooms.
11. Do not immerse in water or other liquids.
12. If the device has been dropped, turn it off and unplug the power adapter.
13. Turn off after use, clean the device, and store it in a dry place.
14. This device is intended for PRIVATE USE ONLY. It may only be used for the purposes described here.
15. Use only the accessories provided by the manufacturer. This applies in particular to the permanently installed cable, which cannot be replaced.
16. In case of damage to the electrical parts, especially if the cable is defective, the device must not be operated. Since the cable cannot be replaced, the entire device must be disposed of. Please do not, under any circumstances, open the device or its electrical parts yourself, and do not make any structural modifications.

## Safety instructions for using essential oils and blends

Please carefully read the enclosed instructions for use and the information on the labels of the essential oils and blends you are using. Do not use viscous or highly pigmented essential oils, as these can damage the device. For more information on this, contact PRIMAVERA customer service or visit the product page in our online store.

## Disposal

When this electrical or electronic device is no longer in use, every consumer is legally obligated to dispose of it separately from unsorted municipal waste. Electrical devices are therefore marked with the following symbol. You can drop off devices at the collection points of public waste disposal authorities or at the return facilities set up by manufacturers and distributors in accordance with the German Electrical and Electronic Equipment Act (ElektroG). These collection points are regulated in accordance with Directives 2012/19/EU and 2006/66/EC, depending on the country and its legislation. We reserve the right to make technical changes to the aroma device as well as content changes to these instructions for use.



## Disclaimer

We exclude all liability for damage caused by improper use or damage caused by the use of essential oils / blends.

Model:	NA-343A
Capacity:	5-8 drops of a blend
Operating mode:	1 hour of continuous operation, followed by automatic shut-off
Heating temperature:	Approx. 49 °C (+/- 5 °C)
Material:	High-quality glazed ceramic
Input voltage:	C 220 – 240 V, 50 Hz
Power consumption:	12 watts

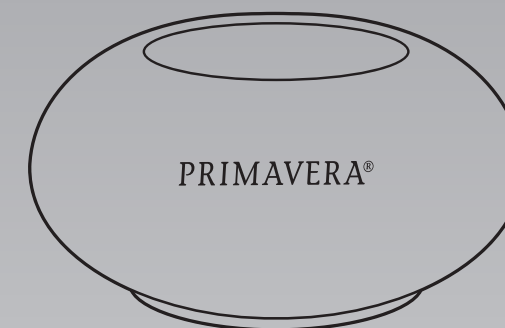
You can find more information about the product and its use on the page [www.primaveralife.com/aroma-thermoduftstein-simply-silent.html](http://www.primaveralife.com/aroma-thermoduftstein-simply-silent.html)



PRIMAVERA®

# Simply Silent

AROMA WARMING STONE



PRIMAVERA LIFE GMBH, Naturparadies 1, 87466 Oy-Mittelberg, Germany, info@primaveralife.com

EN May 2026

**Important information  
about usage and cleaning**

## Silent. Simple. Waterless.

### Dear Customer,

Thank you for choosing the PRIMAVERA Aroma Warming Stone Simply Silent.

To ensure you can enjoy this high-quality Aroma Warming Stone for as long as possible, please read these instructions for use carefully and pay close attention to all safety instructions.

We wish you much joy and wonderfully scented hours with this silent and easy-to-use aroma device.

You can find more information about the product on our website at [www.primaveralife.com](http://www.primaveralife.com).

Scented greetings from nature's paradise in the Allgäu region of southern Germany.

Your PRIMAVERA Team

### Use in children's rooms

If you use the Aroma Warming Stone in a children's room, please make sure to keep the scenting time short (30 minutes) and the number of drops of the blend used to a minimum (1-2 drops), and air the room thoroughly after use. **Place the device out of the reach of children!**

### Use of the cable / plug

The permanently attached cable must not be used if the pins of the plug or the cable itself are damaged. The cable and the plug cannot be replaced. If the cable or the plug is damaged, the entire device must be disposed of. We accept no liability for damage caused by unauthorized opening and replacement of the cable or by the use of third-party accessories.

### Ceramic

Ceramic is a natural material. Inclusions, irregularities, and color variations are signs of handcrafted quality. Every Aroma Warming Stone Simply Silent is unique.

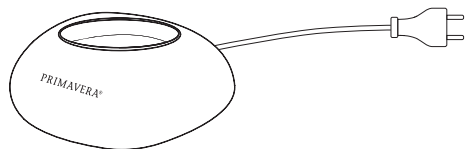
### Attention

Clean the bowl after each use. Do not use any chemical products (such as acids, lyes, etc.) or corrosive cleaning agents to clean the device. Make sure that the area around the Aroma Warming Stone does not get damp or wet. If dampness occurs, turn off the Aroma Warming Stone.

### Important

The ON/OFF switch is located on the underside of the device and is operated by lightly pressing down on the top of the device. There is no need to turn it over!

The Aroma Warming Stone operates on 220 to 240 volts and is supplied with a permanently installed power cord.



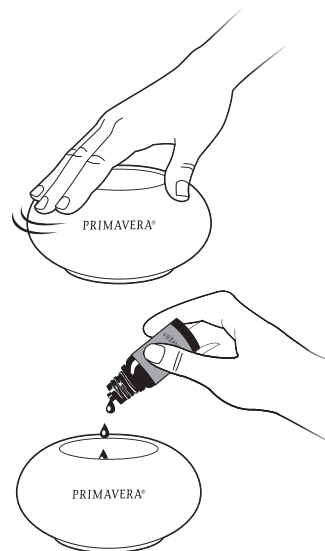
### Attention

**The Aroma Warming Stone reaches temperatures of up to 49 °C (+/- 5 °C) inside the bowl during operation. The inside of the bowl should therefore not be touched during use!**

## Start-up

### Preparation

- Plug the power cord into the electrical outlet.
- Place the Aroma Warming Stone on a smooth, stable, waterproof, and robust surface.
- To start the device, press lightly on the top of the Aroma Warming Stone.
- This activates the ON/OFF switch located on the base under the front left corner of the Aroma Warming Stone.
- The base is softly illuminated with a warm white LED while the device is in operation.
- Add 5-8 drops of a blend to the bowl WITHOUT adding any water.
- After running for one hour, the Aroma Warming Stone turns off automatically.
- To turn off the Aroma Warming Stone before the hour is up, lightly press down on the top again. When the warm white LED light goes out, the device is turned off



### Attention

**The Aroma Warming Stone is designed for use WITHOUT WATER. Please add approx. 5-8 drops of a blend to the bowl.**

### Important

**The Aroma Warming Stone features an automatic shut-off after one hour of continuous heating. It also has built-in overheat protection.**

## Cleaning and care




- Please always clean the Aroma Warming Stone after each use and before changing blend.
- To do this, always turn off the device and disconnect it from the power supply.
- Remove any remaining essential oil using a paper towel or a soft cotton cloth.
- For stubborn residues, you can also use a mild dish soap or a small amount of rubbing alcohol. When cleaning the outside, avoid the logo area, as it could otherwise be damaged.
- Do not use any corrosive, caustic, or abrasive cleaning agents, as they can damage the surface.
- Under no circumstances should liquid enter the device through the cover on the bottom. If this happens, the device must be allowed to dry out for at least 3 days before being used again.
- Do not immerse the device in water or other liquids, and only use it again once it is completely dry.
- If you do not plan to use the device for an extended period, please clean it as described above and store it in a dry place.

## Safety warnings

### Caution:

- Please read the instructions for use carefully before using this product, and never use it for purposes other than those listed here.
- Please remove all packaging materials before use.
- Only use the permanently attached cable to prevent damage to the product.
- When unplugging, please hold the device and the plug firmly with your hands. Do not pull on the cable!
- If the device will not be used for an extended period: Unplug it, clean it, and let it dry completely.
- The precautionary measures listed in these instructions for use are intended to ensure the safe and proper use of the Aroma Warming Stone, thereby protecting the user and other persons from hazards, and the device from damage. Please be sure to follow the instructions below!

### Warning:

-  • Stop using the device immediately and unplug it if smoke, an abnormal odor, unusual noises, or other anomalies occur.
-  • Do not modify, repair, or disassemble this device, as this may result in fire, electric shock, or other damage.
-  • If this device is not going to be used for a long period of time, it must be disconnected from the power supply and cleaned. Otherwise, a malfunction or an electric shock may occur.
- The device must always be turned off and disconnected from the power supply before being filled, cleaned, or serviced.
- The device may only be used with the recommended vaporizing medium. The use of other substances can lead to a toxic hazard or fire risk.
- Please avoid dripping essential oil / blend onto the outside of the device or onto furniture. If this happens accidentally, wipe it off immediately with a damp cloth and a little dish soap if necessary! Essential oils can damage and discolor sensitive surfaces such as plastics or wood. In most cases, this damage cannot be reversed!
- This device is not a medical device. Use only as an aroma device, not for inhalation.
- When using the device or essential oils / blends during pregnancy or an illness, we recommend consulting your doctor or naturopath for advice beforehand.
- In case of discomfort, stop using the device and open a window for ventilation.
- Do not touch the device or the electrical outlet with wet hands, and do not allow water or other liquids to spill over or into the device, as this can result in an electric shock.
- The device is partially made of ceramic; if it breaks, there is a risk of injury from sharp edges. Therefore, do not touch the broken pieces with your bare hands!