

Mandatory Safety



- Remove all outer packaging before use.



- This device is not intended for use by persons with reduced physical or cognitive capacities without the necessary experience or knowledge, unless they have been trained to use the device correctly by a person responsible for their safety and have understood the risks involved.



- Stop using the product immediately and unplug the device once smoke, smell, unusual sounds or other anomalies occur.
- Do not modify, fix, or dismantle this product, as fire, electric shock, or damage may occur.



- When this product remains unused for a long period of time, the main unit must be unplugged from the electrical socket. Otherwise electric shock malfunction may occur.

- This product must be disconnected from the power sources before cleaning and maintenance.

- Please avoid dripping the essential oil onto the exterior of the product or onto furniture. If essential oil dripping accidentally occurs, wipe off immediately to avoid discoloration of the furniture.

- This product is not medical equipment. Directly inhaling the aroma mist from the spout is not recommended.

- If you have any special physical conditions, such as pregnancy, lung failure, cancer, epilepsy, or other illnesses, please consult your doctor before using essential oils. Stop using the product and open the windows for ventilation if you start to feel uncomfortable.

- Essential oils are highly concentrated and should always be handled with care, including the amount for each use.

- This product is NOT a toy. Do not let children use this product. Keep the device, all parts/components, and the power cable out of the reach of children. Children should be properly supervised to ensure that they will not play with this product.

- This Aroma Warming Stone is to be used under adult supervision only. Read detailed instructions and caution included before use. Small parts are a choking hazard and are not suitable to be within reach of children.

- Small parts included may be swallowed and cause suffocation. Therefore, these parts should not be stored within reach of children.

- To avoid fire, electric shock, injury or damage, do not place the product in the areas listed below:

- Environments exposed to direct sunlight or temperatures under 10 °C or over 30 °C.

- Keep away from sources of ignition.

- Pressurized objects and combustibles.

Safety advice for the use of essential oils and fragrance blends

Safety Advice for the Use of Essential Oils and Blends

Please make sure to carefully read the instructions provided and the information on the labels of your essential oils and blends. Please do not use viscous or intensely pigmented essential oils, as these may damage the device. You can obtain more information on this from PRIMAVERA customer service.

Disposal

If this electrical or electronic device is no longer used, consumers are legally obliged to dispose of it separately from unsorted household waste. Electrical devices are therefore marked with the symbols shown below. You can deposit devices at the public waste management authority collection points or at disposal points set up by the manufacturers and retailers within the meaning of the ElektroG (electrical and electronic equipment law). You can find an online directory of collection and disposal points in Germany at www.ear-system.de. These collection points are regulated according to 2012/19/EU and 2006/66/EC, subject to state and legislation.



Disclaimer

We accept no liability for damage resulting from incorrect use of this product or caused by the use of essential oils.

Model:	NA-343A
Fill Amount:	5–8 drops of a pure, natural essential oil blend or single essential oil
Operating mode:	1 hour of continuous operation with automatic shutdown
Heating temperature:	Approx. 49 °C (+/- 5 °C) / 120 °F (+/- 9 °F)
Material:	High quality, glazed ceramic
Input voltage:	AC 220 – 240 V, 50 Hz
Power consumption:	12 Watt

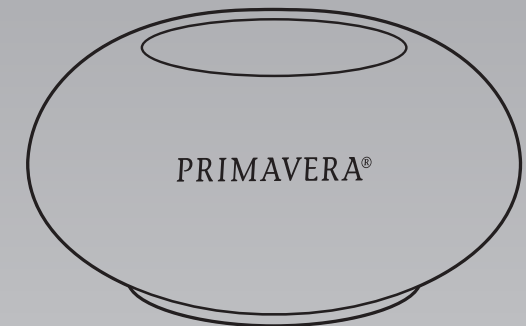
PRIMAVERA LIFE GMBH
Naturparadies 1
87466 Oy-Mittelberg
Germany
www.primaveralife.com



PRIMAVERA®

Simply Silent

AROMA WARMING STONE



PRIMAVERA®

Important Information About Usage and Cleaning

EN May 2022

Dear Customer,

Thank you for choosing the PRIMAVERA Aroma Warming Stone Simply Silent.

To make sure you can enjoy this premium warming stone for as long as possible, please read this instruction manual carefully and follow all safety instructions exactly. We wish you much enjoyment and many fragrant hours with this silent, easy-to-use fragrance device.

Fragrant greetings from the Allgäu

Your PRIMAVERA Team

Silent. Simple. Waterless.

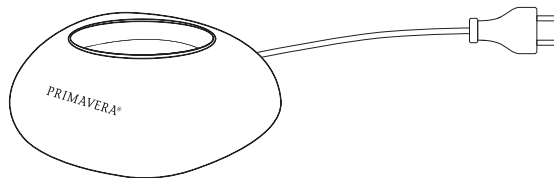
- Silent, rapid warm up to the ideal diffusion temperature of approx. 49 °C (120 °F)
- Easy to use and clean due to high quality, glazed ceramic
- Without water; just with the addition of a few drops of essential oil
- Fragrances rooms up to 20 m² and switches off automatically after one hour
- Also ideal for bedrooms and offices

Product description

The Aroma Warming Stone Simply Silent is primarily made of high-quality, glazed ceramic.

The ON/OFF switch is located on the bottom of the device, and can be activated by pressing lightly on the machine from above. If desired, the switch can also be operated directly on the underside.

The Aroma Warming Stone works at 220 to 240 volts, and is shipped with a permanently installed power cable.



CAUTION

During operation, the inside of the Aroma Warming Stone bowl heats up to 49 °C / 120 °F (+/- 10 %). Do not touch the inside of the bowl during use!

Instructions for Use in a Child's Room

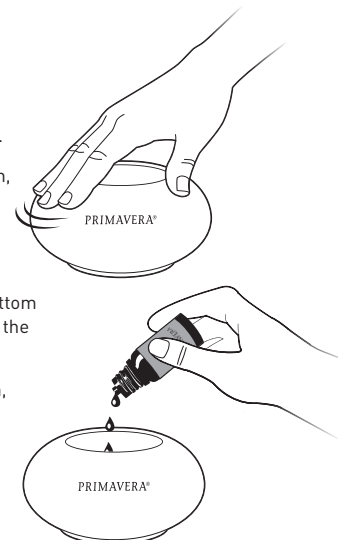
When using the Aroma Warming Stone Simply Silent in a child's room, be sure to limit the scenting time (30 minutes) and to keep the number of aroma oil drops low (3 drops) and to adequately ventilate the room after use.

How to fill and use the device safely. It is important to follow these instructions!

- Continuous use of the Aroma Warming Stone may damage the product in the long term and shorten its lifetime. Please take a one-hour break after each 12 hours of use.
- Only use as a fragrance device, not for inhalation.
- Do not use any liquids other than essential oils.
- Do not move or cover the Aroma Warming Stone while in use.
- Keep the device upright, in a safe place, and on a firm and level surface.
- Only use the device indoors within a temperature range of 50 °F to 86 °F. Not suitable for damp areas.
- Do not immerse in water or other liquids.
- If the device has been dropped, unplug it from the power supply.
- After use, switch off and unplug the device, clean it, and store in a dry place.
- If water or liquid has entered the interior through the bottom, disconnect the device from the power supply immediately and leave to dry for at least 3 days.
- Do not touch the power plug with wet hands!
- This device is intended for PERSONAL USE ONLY. It must only be used for the purposes described here. Only use the accessories recommended by the manufacturer. This applies in particular to the permanently attached power cable.
- If an abnormal odor or noise develops, switch off the device immediately and disconnect it from the power supply.
- If any damage occurs to electrical parts, especially if the power cable is faulty, do not operate the device. In this case, please contact us or have the device repaired by an authorized, qualified person. Please do not open the device or electrical parts yourself under any circumstances, and do not modify the device.

How to use

- Plug the power plug into the power socket.
- Set the Aroma Warming Stone on a smooth, steady, waterproof, and sturdy surface.
- To start operation, press lightly on the Warming Stone from above.
- This activates the ON/OFF switch at the bottom of the device under the front left corner of the Warming Stone.
- The base is gently illuminated with a warm, white LED while the device is in operation.
- Add 5-8 drops of an all-natural fragrance blend or a single essential oil, WITHOUT adding water, to the bowl.



- The Aroma Warming Stone will switch off automatically after one hour of operation.
- To switch off the Warming Stone before one hour has elapsed, press it again slightly from above. When the warm white LED light goes out, the device is switched off.

CAUTION

The Aroma Warming Stone is designed for use **WITHOUT WATER**. Please add approx. 5–8 drops of a fragrance blend or a single essential oil to the bowl.

IMPORTANT

The Aroma Warming Stone has an automatic switch-off after one hour of continuous heating. It also has overheating protection.

Cleaning and care

- Please always clean the Aroma Warming Stone after each use and before each fragrance change.
- Always switch the device off and disconnect it from the power supply.
- Remove any remaining essential oil with a paper towel or a soft cotton cloth.
- For stronger residues, use a mild detergent or a small amount of rubbing alcohol. Do not include the logo area in external cleaning, otherwise it may be damaged.
- Do not use corrosive, caustic or abrasive cleaning agents, as these can damage the surface.
- Under no circumstances should liquid get into the device through the cover in the floor. If this happens, the device needs to dry out for at least 3 days before being used again.
- Do not immerse the device in water or other liquids, and only put it back into operation after it has completely dried.
- If you will not be using the device for a long time, please clean it as described above and store it in a dry place.